

WHAT YOU CAN EXPECT

- We need your consent to collect information about you
- We need information from you to be able to provide you with reliable results and your doctors with helpful advice
- We will be fair in the way we collect information
- Most information is collected at the time that a pathology request is written out by your doctor. Your doctor will generally explain why he or she is recording the information and where it is going to.
- Where you visit a pathology collection centre and more information is sought you will be asked if it is OK to collect that information
- Pathology practices have their record systems inspected for laboratory accreditation and they must be reliable and secure
- The best way to get your results is in consultation with your doctor so they can be explained in the context of your health care
- You may, however, request access to information we hold about you
- You may discuss any concerns you may have about how we handle your information. You should speak to your pathology practice first. Contact information is provided on the back page.
- More information about the pathology information life cycle is given inside...

Further Information

AAPP

www.aapp.asn.au

Federal Privacy Commissioner

Hotline 1300 363 992

www.privacy.gov.au

This brochure has been produced by the Australian Association of Pathology Practices for its members. Where there has been no alterations this can be relied on to reflect best practice under the Privacy Act



PO Box 226
MAWSON ACT 2607

P: (02) 6282 2277

F: (02) 6282 4210

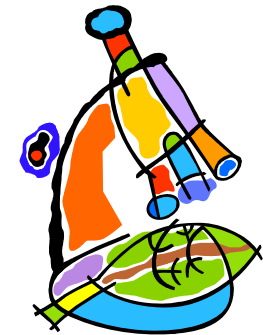
E: aapp@communio.com.au

W: www.aapp.asn.au

PRIVACY and PATHOLOGY

OUR POLICY IS TO PROTECT YOU

Pathology is a specialist medical service. The quality of our service depends on information, including what we collect from you. This brochure shows what you might expect from this pathology practice under the National Privacy Principles.



My Pathology

The National Privacy Principles and Health

Protecting privacy throughout the PATHOLOGY information life cycle

